



Soodstrasse 52, 8134 Adliswil

## TECHNICAL INFORMATION

### Year of Construction

1997

### Heating

Gas; Distribution via Thermo-Active Ceilings (TAC / TABS)

### Ventilation

Fresh Air Supply 30-36 cbm/h (In accordance with SIA 2024)

### Cooling

Cooling generation by means of 2 cooling machines of each 220kW, maximum cooling capacity 440kW. Cooling is provided by Thermo-Active Ceilings, as well as air condition units and fancoils, partially cooling ceilings (5th floor and 2 telepresence rooms)

### Power & IT

Main Power Supply is 1250 Ampere. There are 3 technical risers with power distribution panels per floor. Swisscom is the local telecom provider, whereas additional providers can be installed. All areas are equipped with IT-cabling, Cat.5

### Emergency Power (UPS)

UPS as well as a Emergency Power Generator (24h – diesel tank) is located in the building

### Sanitary facilities

Each floor has 3 sanitary blocks with separate male and female toilet facilities as well as a disabled toilet

### Access Control

Building management system (BacNet), badge system, CCTV, building surveillance system, singularization system at main entrance

### Elevators

4 Staff lifts (8 persons/640kg)  
1 Goods lift (3200kg/42 Persons)

### Deliveries

Truck delivery at rear entrance, including a hoisting platform

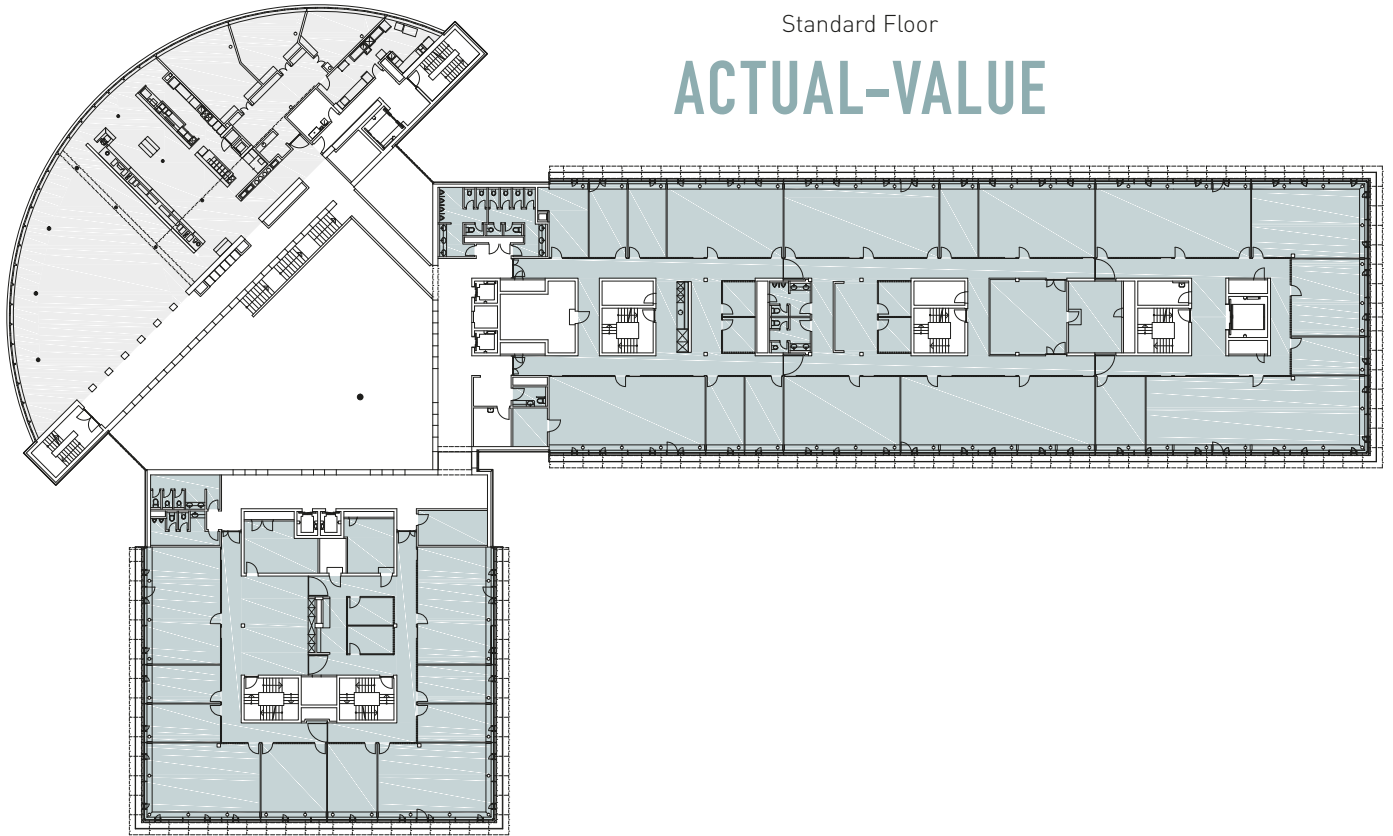
### Description of fit-out

- Floor: Screed with carpet, partial ducting
- Ceiling: Suspended acoustic metal ceilings (44 cm), partially with integrated ventilation, cooling as well as lighting
- Partition walls: Glass partitions and plaster partitions
- Room height: 2.91 m (Grd floor)  
2.51 m (1st-3rd floor)  
2.71 m (4th floor)
- Floor loading: 500 kg/sqm
- Special areas: Auditorium (Maximum capacity of ca 150 persons)

[WWW.SOOD52.CH](http://WWW.SOOD52.CH)

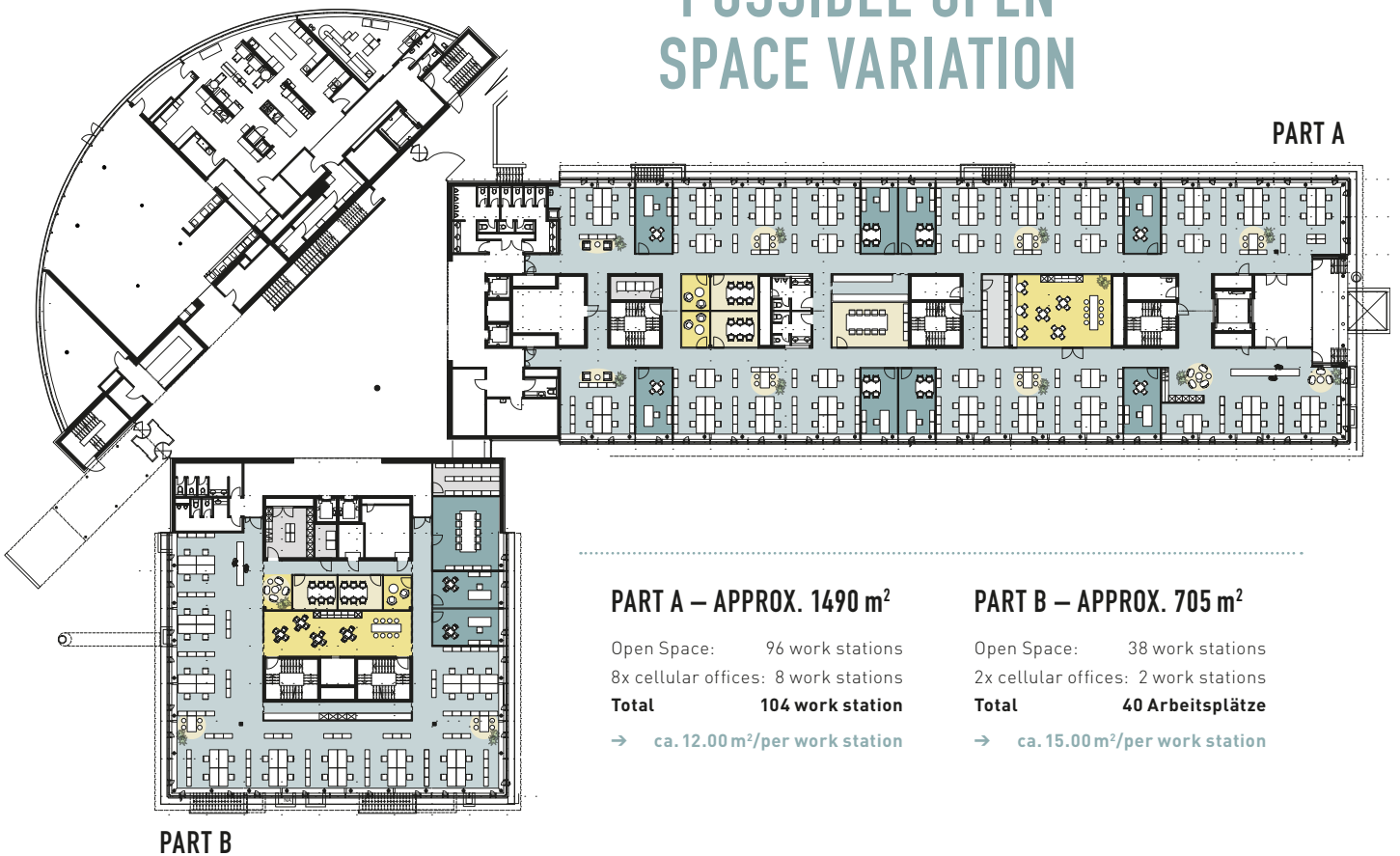
Standard Floor

# ACTUAL-VALUE



Standard Floor

# POSSIBLE OPEN SPACE VARIATION



**PART A – APPROX. 1490 m<sup>2</sup>**

Open Space: 96 work stations  
8x cellular offices: 8 work stations  
**Total 104 work station**

→ ca. 12.00 m<sup>2</sup>/per work station

**PART B – APPROX. 705 m<sup>2</sup>**

Open Space: 38 work stations  
2x cellular offices: 2 work stations  
**Total 40 Arbeitsplätze**

→ ca. 15.00 m<sup>2</sup>/per work station

[WWW.SOOD52.CH](http://WWW.SOOD52.CH)